

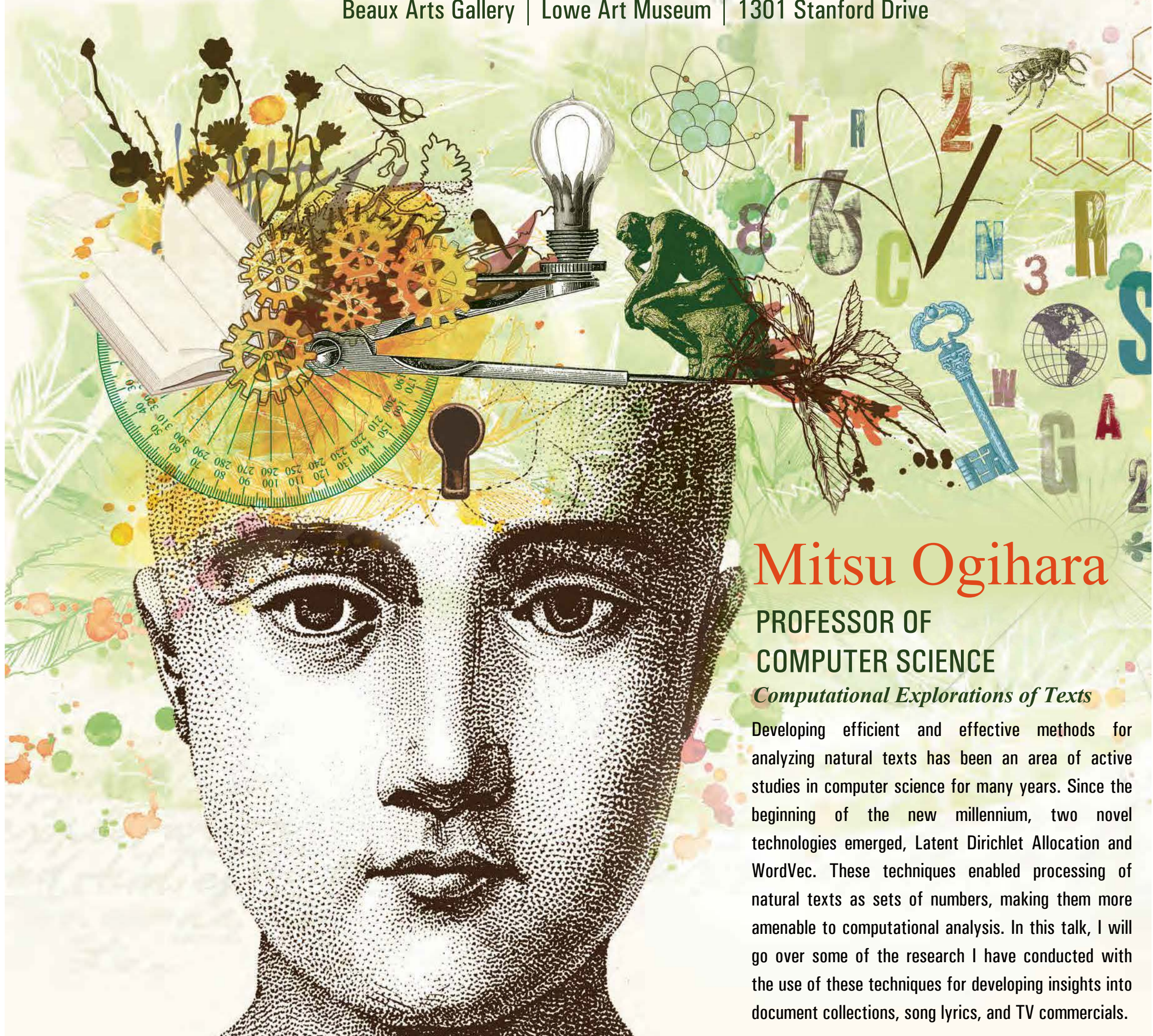
Cooper Fellow

LECTURE SERIES

Wednesday, October 23, 2019

3:30 P.M. { reception to follow }

Beaux Arts Gallery | Lowe Art Museum | 1301 Stanford Drive



Mitsu Ogihara

PROFESSOR OF
COMPUTER SCIENCE

Computational Explorations of Texts

Developing efficient and effective methods for analyzing natural texts has been an area of active studies in computer science for many years. Since the beginning of the new millennium, two novel technologies emerged, Latent Dirichlet Allocation and WordVec. These techniques enabled processing of natural texts as sets of numbers, making them more amenable to computational analysis. In this talk, I will go over some of the research I have conducted with the use of these techniques for developing insights into document collections, song lyrics, and TV commercials.

UNIVERSITY OF MIAMI

COLLEGE of
ARTS & SCIENCES



Cooper Fellows Lectures are free and open to the public. Parking is available in the Pavia garage. For more information, contact Rose Glemaud at 305-284-4021; rglemaud@miami.edu.

WWW.AS.MIAMI.EDU/LECTURES

Fall 2019